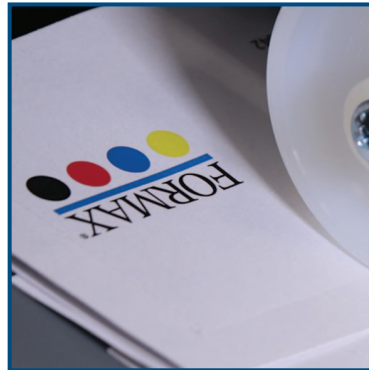
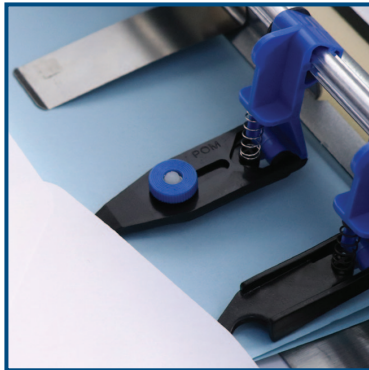


# FORMAX<sup>®</sup>



## Government Catalog

01 JAN 2024 - 31 DEC 2024



Data Destruction • Pressure Seal  
Mailing • Digital Print & Finishing



Tax ID #: 02-0407657  
UEI #: W8UESPNJ2F67  
Cage Code: 3JNM5



Contract Holder  
Contract GS-02F-0209S

1 Education Way  
Dover, NH 03820 USA  
Phone: 1-800-232-5535  
Fax: 603-743-6366  
[www.formax.com](http://www.formax.com)

# DATA DESTRUCTION SOLUTIONS



Paper and Optical Media • NSA Approved High Security - Classified  
Commercial - Office Use/Unclassified • Industrial - Bulk Destruction/Unclassified

## HIGH SECURITY

Online Demos at [www.formax.com](http://www.formax.com)

Formax High Security Office Shredders have been evaluated by NSA and meet the requirements of NSA/CSS specification 02-01 for Level 6 High Security cross-cut paper shredders. These high security shredders are ideal for classified documents and optical media and integrate all of the commercial-grade features found on our Office models.



### FD 8300HS, FD 8400HS-1, FD 8500HS/HS-1

- Meets NSA Level P-7 high security shredding requirements
- LED Control Panel with load indicator
- Auto Start/Stop, Auto Reverse & Auto Cleaning
- High-quality metal cabinet with casters
- FD 8500HS has extra-wide 16" feed opening
- All-metal gearing
- Electronic safety switch for cabinet door
- Heavy-duty waste bin
- Energy-saving ECO Mode automatically goes into standby after 5 minutes of inactivity
- Thermal overload protection
- Heat-treated steel cutters
- Shreds paper only, no staples or paper clips
- EvenFlow™ Internal Oiling System: standard on 8400HS-1 & 8500HS-1, optional on 8300HS, 8500HS

	FD 8300HS	FD 8400HS-1	FD 8500HS/HS-1
<b>GSA PRICE:</b>	<b>\$2,125</b>	<b>\$2,752</b>	<b>\$4,224 / \$4,589</b>
<b>1-Yr Extended Warranty:</b>	<b>\$175</b>	<b>\$239</b>	<b>\$349 / \$399</b>
<b>Oil / (6) 8 oz. bottles:</b>	#8000-10	#8000-10	#8000-10
<b>Oil for AutoOiler System (8) 16 oz. bottles:</b>	N/A	#8000-12	#8000-12
<b>Oil for AutoOiler System (4) 1 gal. bottles:</b>	N/A	#8000-20	#8000-20
<b>Bags / case (qty):</b>	(200) #8000-70	(200) #8000-40	(100) #8000-50
<b>Cutting Style:</b>	Cross Cut	Cross Cut	Cross Cut
<b>Shred Size:</b>	1/32" x 3/16"	1/32" x 3/16"	1/32" x 3/16"
<b>Sheet Capacity:</b>	6 to 8*	7 to 8*	6 to 7*
<b>1-Hour NSA Durability Test:</b>	6 reams / Feeding 3 sheets	10 reams / Feeding 5 sheets	10 reams / Feeding 4 sheets
<b>Speed:</b>	23 fpm	23 fpm	35 fpm
<b>Feed Opening:</b>	9.5"	10.25"	16"
<b>Bin Capacity:</b>	15 gal.	28 gal.	33 gal.
<b>Security Level:</b>	P-7	P-7	P-7

\* Sheet capacity varies depending on paper and power supply



### FD 8650HS High Security AutoOiler

- Meets NSA Level P-7 high security shredding requirements
- EvenFlow™ Internal Automatic Oiling System
- Auto Start/Stop, Auto Reverse & Auto Cleaning
- LED Control Panel with load indicator
- High-quality metal cabinet with casters
- Extra-wide 16" feed opening
- All-metal gearing
- Electronic safety door switch
- Energy-saving ECO Mode
- Heavy-duty waste bin
- Thermal overload protection
- Heat-treated steel cutters
- Shreds paper only, no staples or paper clips



\* Sheet capacity varies depending on paper and power supply

### FD 8650HS

<b>GSA PRICE:</b>	<b>\$4,996</b>
<b>1-Yr Extended Warranty:</b>	<b>\$399</b>
<b>Oil for AutoOiler System (8) 16 oz. bottles:</b>	#8000-12
<b>Oil for AutoOiler System (4) 1 gal. bottles:</b>	#8000-20
<b>Bags / case of 100:</b>	#8000-50
<b>Cutting Style:</b>	Cross Cut
<b>Shred Size:</b>	1/32" x 3/16"
<b>Sheet Capacity:</b>	14 to 15*
<b>1-Hour NSA Durability Test:</b>	18 reams / feeding 8 sheets
<b>Speed:</b>	24 fpm
<b>Feed Opening:</b>	16"
<b>Bin Capacity:</b>	53 gal.
<b>Security Level:</b>	P-7



### FD 8650HS-D / FD 8730HS-D High Security Shredders with Deployment Package

- Includes ATA Case, bags, 2 gallons of oil
- ATA Case features removable top cover for quick deployment
- Rugged casters for portability

	FD 8650HS-D	FD 8730HS-D
<b>GSA PRICE:</b>	<b>\$7,381</b>	<b>\$9,156</b>
<b>Specifications:</b>	See FD 8650HS	See FD 8730HS
<b>Dimensions:</b>	32" W x 28" D x 54 3/4" H	
<b>Weight:</b>	452 lbs., includes shredder and case	



## FD 8730HS High Security Paper & Optical Media

Paper

Optical Media

- Meets NSA requirements for high security paper shredding and optical media destruction
- Dual feed openings: one for paper, one for media
- Shreds paper, CDs, DVDs and credit cards
- LED Control Panel with load indicator
- Auto Start/Stop, Auto Reverse & Auto Cleaning
- EvenFlow™ Internal Automatic Oiling System
- ECO Mode automatically goes into standby after 5 minutes of inactivity
- Separate heavy-duty waste bins
- All-metal cabinet with casters
- Safety switch for cabinet door
- All-metal gearing
- Thermal overload protection
- Heat-treated steel cutters



Separate Feed Openings for Paper & Optical Media

<b>GSA PRICE:</b>	<b>\$6,160</b>	
<b>1-Yr Extended Warranty:</b>	<b>\$399</b>	
<b>Oil / (8) 16 oz. bottles:</b>	#8000-12	
<b>Oil / (4) 1 gal. bottles:</b>	#8000-20	
<b>Bags / case of 100:</b>	#8000-50	
<b>Cutting Style:</b>	Cross Cut	Cross Cut
<b>Shred Size:</b>	1/32" x 3/16"	1/16" x 5/32"
<b>Feed Capacity:</b>	14 to 15 sheets*	1 CD
<b>1-Hr NSA Durability Test:</b>	19 reams / feeding 8 sheets	
<b>Speed:</b>	23 fpm	2,000 CDs per hour
<b>Feed Opening:</b>	9 3/8"	4 7/8"
<b>Bin Capacity:</b>	31 gal.	18.5 gal.
<b>Security Level:</b>	P-7	O-5

\* Sheet capacity varies depending on paper and power supply

## FD 8732HS High Security Paper & Optical Media

Paper

Optical Media

- NSA/CSS EPL listed, meets 2018 requirements for particle size of 2mm x 2mm for DVD and Blu-ray destruction
- Meets NSA requirements 02-01 for Level P-7 high security paper shredding
- Dual feed openings: one for paper, one for media
- Shreds paper, CDs, DVDs, and Blu-ray discs
- LED Control Panel with load indicator
- Auto Start/Stop, Reverse & Cleaning
- EvenFlow™ Internal Automatic Oiling System
- Two separate heavy-duty waste bins
- High-quality metal cabinet with casters
- All-metal gearing
- Thermal overload protection
- Energy-saving ECO Mode
- Heat-treated steel cutters



Scan for more information



<b>GSA PRICE:</b>	<b>\$8,190</b>	
<b>1-Yr Extended Warranty:</b>	<b>\$399</b>	
<b>Oil / (8) 16 oz. bottles:</b>	#8000-12	
<b>Oil / (4) 1 gal. bottles:</b>	#8000-20	
<b>Bags / case of 100:</b>	#8000-50	
<b>Cutting Style:</b>	Cross Cut	Cross Cut
<b>Shred Size:</b>	1mm x 5mm	2mm x 2mm or less
<b>Feed Capacity:</b>	10-11 sheets *	1 disc at a time
<b>NSA Capacity Rating:</b>	High volume	High volume
<b>Speed:</b>	Up to 18 fpm	Approx. 800 discs/hour
<b>Feed Opening:</b>	9.4"	4.9"
<b>Bin Capacity:</b>	28 gal.	21 gal.
<b>Security Level:</b>	P-7	O-6

\* Sheet capacity varies depending on paper and power supply

## FD 87HD Hard Drive Punch

FD 87HD

- Meets NSA/CSS requirements for Hard Drive Destruction Devices
- Punching die made of hardened, nickel-plated steel
- Powerful, efficient AC geared-motor
- Auto Reverse: Built-in controls switch motor into reverse to clear jam, protecting the punching die
- Heavy duty steel gears
- LED lights illuminate the punching chamber
- Transparent safety shield
- Electronic safety switch for cabinet door
- LED control panel
- Auto Stop after each cycle
- Convenient sturdy plastic waste bin
- All-metal cabinet with casters



<b>GSA PRICE:</b>	<b>\$3,755</b>
<b>1-Yr Extended Warranty:</b>	<b>\$340</b>
<b>Punch Hole Size:</b>	.39"
<b>Hard Drive Size:</b>	2 1/2" or 3 1/2"
<b>Feed Opening:</b>	4.65"
<b>Punching Cycle:</b>	14 seconds
<b>Security Level:</b>	H-2 (DIN 66399 standard)

## FD 87HDS / FD 87HDS-R Hard Drive Shredder

3.5" Drive

2.5" Drive

- Destroys desktop (3.5") and laptop (2.5") hard drives
- Separate feed openings, fully enclosed with metal shields for safety
- LED Control Panel with load indicator
- Auto Start/Stop, Auto Reverse & Auto Cleaning
- Resettable counters for each feed opening
- Heavy-duty waste bin
- All-metal cabinet with casters
- Safety switch for cabinet door
- All-metal gearing
- Thermal overload protection
- Heat-treated steel cutters
- FD 87HDS-R model includes recording system



Drives shredded with the FD 87HDS

<b>GSA PRICE:</b>	<b>FD 87HDS \$11,801 / FD 87HDS-R \$15,676</b>
<b>1-Yr Extended Warranty:</b>	<b>n/a</b>
<b>Oil / (8) 16 oz. bottles:</b>	#8000-12
<b>Oil / (4) 1 gal. bottles:</b>	#8000-20
<b>Shred Size:</b>	1.6" (40mm) x random      .19" (5mm) x random
<b>Feed Capacity:</b>	1 drive at a time      1 drive at a time
<b>Speed:</b>	3 - 4 drives/minute      3 - 4 drives/minute
<b>Feed Opening:</b>	4.72" (120mm)      3.54"
<b>Security Level:</b>	H-6 (DIN 66399 standard)

Separate feed openings for 3.5" and 2.5" drives



This powerful compact model is designed for use alongside the desk or work station. It provides on-the-spot destruction of sensitive paperwork, phone messages and notes generated during the day.



**FD 8302CC**

- Auto Start/Stop & Auto Reverse
- 1/16" wide micro-cut
- High-quality metal cabinet with casters
- All-metal gearing
- Electronic safety switch for cabinet door
- Heavy-duty waste bin
- Thermal overload protection
- Heat-treated steel cutters require minimal oil
- Accepts staples and paper clips

**FD 8302CC**

<b>GSA PRICE:</b>	<b>\$1,295</b>
<b>1-Yr Extended Warranty:</b>	<b>\$165</b>
<b>Oil / (6) 8 oz. bottles:</b>	#8000-10
<b>Oil / (4) 1 gal. bottles:</b>	#8000-20
<b>Bags / case of 200:</b>	#8000-30
<b>Cutting Style:</b>	Cross Cut
<b>Shred Size:</b>	1/16" x 5/8"
<b>Sheet Capacity:</b>	7 to 8*
<b>Speed:</b>	27 fpm
<b>Feed Opening:</b>	10"
<b>Bin Capacity:</b>	9.5 gal.
<b>Security Level:</b>	P-5

\*Sheet capacity varies depending on paper and power supply

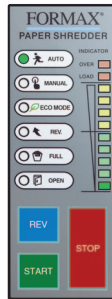
OFFICE

Our office shredders are built to the highest standards for operator convenience, safety, and reliability in a wide variety of models. Choices include a range of shred sizes, manual or automatic operation and various sized feed openings. Whatever the application or security level, Formax Shredders are designed to handle your company's sensitive and private information.



**FD 8402CC**

- LED Control Panel with load indicator
- Auto Start/Stop, Auto Reverse & Auto Cleaning
- High-quality metal cabinet with casters
- All-metal gearing
- Electronic safety switch for cabinet door
- Heavy-duty waste bin
- Thermal overload protection
- ECO Mode automatically goes into standby after 5 minutes of inactivity
- Special heat-treated steel cutters require minimal oil
- Accepts staples, paper clips & credit cards
- Optional EvenFlow™ Internal Oiling System



LED Control Panel with load indicator

**FD 8402CC**

<b>GSA PRICE:</b>	<b>\$1,800</b>
<b>1-Yr Extended Warranty:</b>	<b>\$175</b>
<b>Oil / (6) 8 oz. bottles:</b>	#8000-10
<b>Oil / (4) 1 gal. bottles:</b>	#8000-20
<b>Bags / case of 200:</b>	#8000-40
<b>Cutting Style:</b>	Cross Cut
<b>Shred Size:</b>	5/32" x 1-1/5"
<b>Sheet Capacity:</b>	24 to 26*
<b>Speed:</b>	33 fpm
<b>Feed Opening:</b>	12.2"
<b>Bin Capacity:</b>	20 gal.
<b>Security Level:</b>	P-4

\*Sheet capacity varies depending on paper and power supply

**FD 8502AF AutoFeeder**

**FD 8502AF**



- AutoFeed Hopper has a capacity of up to 175 sheets, 11" x 17", for hands-free operation
- LED Control Panel with load indicator
- Auto Start/Stop, Auto Reverse & Auto Cleaning
- Accepts staples, paper clips & credit cards
- Energy-saving ECO Mode automatically goes into standby after 5 minutes of inactivity
- Extra-wide 16" hand-feed opening
- Metal cabinet with casters
- All-metal gearing
- Heavy-duty waste bin
- Heat-treated steel cutters
- Optional EvenFlow™ Internal Oiling System



<b>GSA PRICE:</b>	<b>\$2,898</b>
<b>1-Yr Extended Warranty:</b>	<b>\$199</b>
<b>Oil (6) 8 oz. bottles / (4) 1 gal. bottles:</b>	#8000-10 / #8000-20
<b>Bags / case of 100:</b>	#8000-50
<b>EvenFlow™ Internal Oiling System:</b>	FD 8000-67
<b>Cutting Style:</b>	Cross Cut
<b>Shred Size:</b>	5/32" x 1-1/5"
<b>Sheet Capacity - AutoFeed / Hand:</b>	Up to 175 sheets* / 16 to 18*
<b>Speed:</b>	33 fpm
<b>Hand-Feed Opening:</b>	16"
<b>Bin Capacity:</b>	26 gal.
<b>Security Level:</b>	P-4

\*Sheet capacity varies depending on paper and power supply



## FD 8502CC

- LED Control Panel with load indicator
- Auto Start/Stop, Auto Reverse
- Auto Cleaning
- Extra-wide 16" feed opening
- Accepts staples, paper clips & credit cards
- High-quality metal cabinet with casters
- All-metal gearing
- Energy-saving ECO Mode automatically goes into standby after 5 minutes of inactivity
- Electronic safety switch for cabinet door
- Heavy-duty waste bin
- Thermal overload protection
- Heat-treated steel cutters
- Optional EvenFlow™ Internal Oiling System

<b>GSA PRICE:</b>	<b>\$2,264</b>
<b>1-Yr Extended Warranty:</b>	<b>\$175</b>
<b>Oil (6) 8 oz. / (4) 1 gal.:</b>	#8000-10 / #8000-20
<b>Bags / case of 100:</b>	#8000-50
<b>EvenFlow™ Internal Oiling System:</b>	FD 8000-67
<b>Cutting Style:</b>	Cross Cut
<b>Shred Size:</b>	5/32" x 1-1/5"
<b>Sheet Capacity:</b>	23 to 25*
<b>Speed:</b>	35 fpm
<b>Feed Opening:</b>	16"
<b>Bin Capacity:</b>	26 gal.
<b>Security Level:</b>	P-4

\* Sheet capacity varies depending on paper and power supply



## FD 8602CC

- LED Control Panel with load indicator
- Auto Start/Stop, Auto Reverse
- Auto Cleaning
- Extra-wide 16" feed opening
- Accepts staples, paper clips & credit cards
- High-quality metal cabinet with casters
- All-metal gearing
- Energy-saving ECO Mode automatically goes into standby after 5 minutes of inactivity
- Electronic safety switch for cabinet door
- Heavy-duty waste bin
- Thermal overload protection
- Heat-treated steel cutters
- Optional EvenFlow™ Internal Oiling System

<b>GSA PRICE:</b>	<b>\$2,365</b>
<b>1-Yr Extended Warranty:</b>	<b>\$175</b>
<b>Oil (6) 8 oz. / (4) 1 gal.:</b>	#8000-10 / #8000-20
<b>Bags / case of 100:</b>	#8000-50
<b>EvenFlow™ Internal Oiling System:</b>	FD 8000-67
<b>Cutting Style:</b>	Cross Cut
<b>Shred Size:</b>	5/32" x 1-1/5"
<b>Sheet Capacity:</b>	33 to 35*
<b>Speed:</b>	22 fpm
<b>Feed Opening:</b>	16"
<b>Bin Capacity:</b>	26 gal.
<b>Security Level:</b>	P-4

\* Sheet capacity varies depending on paper and power supply



## FD 8652CC AutoOiler

- AutoOiler integrated oiling system automatically pumps oil onto the cutting blades for optimal performance
- LED Control Panel with load indicator
- Auto Start/Stop, Auto Reverse & Auto Cleaning
- High-quality metal cabinet with casters
- All-metal gearing
- Electronic safety switch for cabinet door
- Energy-saving ECO Mode automatically goes into standby after 5 minutes of inactivity
- Thermal overload protection
- Heavy-duty waste bin
- Accepts staples, paper clips and credit cards
- Heat-treated steel cutters



## FD 8652CC

<b>GSA PRICE:</b>	<b>\$4,708</b>
<b>1-Yr Extended Warranty:</b>	<b>\$275</b>
<b>AutoOiler Oil (8) 16 oz. bottles:</b>	#8000-12
<b>Bags / case of 100:</b>	#8000-50
<b>Cutting Style:</b>	Cross Cut
<b>Shred Size:</b>	5/32" x 1 19/32"
<b>Sheet Capacity:</b>	Up to 32 sheets*
<b>Speed:</b>	Up to 33 fpm
<b>Feed Opening:</b>	16"
<b>Bin Capacity:</b>	53 gal.
<b>Security Level:</b>	P-4
<b>Power Supply:</b>	110V, 50/60 Hz Dedicated 20A line required

\* Sheet capacity varies depending on paper and power supply



## FD 8704CC / CC-1 Multimedia & Paper

- Dedicated multimedia feed opening shreds SB flash drives CDs, DVDs, and mini-DV cassettes
- Dedicated paper feed opening
- Auto Start/Stop, Auto Reverse, Auto Cleaning
- LED Control Panel with load indicator
- High-quality metal cabinet with casters
- All-metal gearing
- Energy-saving ECO Mode automatically goes into standby after 5 minutes of inactivity
- Electronic safety switch for cabinet door
- Thermal overload protection
- Heavy-duty waste bin
- Heat-treated steel cutters
- EvenFlow™ Internal Oiling System: standard on FD 8704CC-1, optional for FD 8704CC



## FD 8704CC/CC-1

<b>GSA PRICE:</b>	<b>\$2,142 / \$2,607</b>
<b>1-Yr Extended Warranty:</b>	<b>\$175 / \$199</b>
<b>Oil (6) 8 oz. / (4) 1 gal.:</b>	#8000-10 / #8000-20
<b>AutoOiler Oil (8) 16 oz. bottles:</b>	#8000-12
<b>Bags / case of 200:</b>	#8000-40
<b>Cutting Style:</b>	Cross Cut
<b>Shred Size:</b>	5/32" x 1-5/8"
<b>Sheet Capacity:</b>	40 to 45*
<b>Speed:</b>	12 fpm
<b>Feed Opening:</b>	9.4"
<b>Bin Capacity:</b>	28 gal.
<b>Security Level:</b>	P-4

\* Sheet capacity varies depending on paper and power supply

# PLASTIC & LAMINATE SHREDDER

Online Demos at [www.formax.com](http://www.formax.com)

The FD 87 Plasti Shredder has a specially designed dual-blade system to handle plastic and laminated sheets. The two-stage system features a strip cut and spiral blade to ensure efficient shredding of paper, plastic sheets, laminated pages and cards, plastic folders and more.

## FD 87 Plasti Plastic & Laminate Shredder



- Shreds paper, plastic sheets and folders, laminated cards and pages, synthetic paper & more
- Dual-blade cutting system with strip cut and spiral blade efficiently shreds in a two-stage process
- Heat-treated solid steel cutting blades
- LED Control Panel with load indicator
- AC-gear motor
- Rugged heavy-duty molded plastic waste bin
- Auto Cleaning
- Steel cabinet with casters
- Circuit breaker
- Thermal overload protection

<b>GSA PRICE:</b>	<b>\$4,194</b>
<b>Bags / case of 200:</b>	#8000-40
<b>Cutting Style:</b>	Cross Cut
<b>Shred Size - Laminated:</b>	.12" x .55" (3 x 14mm)
<b>Shred Size - Paper Only:</b>	.24" x .55" (6 x 14mm)
<b>Paper Capacity:</b>	36 to 38 sheets*
<b>Laminate Capacity:</b>	1mm to 2.25mm stack**
<b>Speed:</b>	10 fpm
<b>Feed Opening:</b>	12.2" (310mm)
<b>Dimensions:</b>	21.6" W x 21.6" D x 38" H
<b>Waste Bin Capacity:</b>	30 gal. (115 liters)
<b>Security Level:</b>	P-4
<b>Power Supply:</b>	115V, 60 Hz, 400W

\* Paper capacity varies depending on paper type and power supply.  
 \*\* Capacity varies based on laminate thickness and power supply.  
 Samples may be sent to Formax for testing.

# CARDBOARD PERFORATORS

Online Demos at [www.formax.com](http://www.formax.com)

Greenwave Cardboard Perforators transform shipping cartons into eco-friendly packing materials. They can help transition away from single-use plastic and foam packing materials, while reducing the cost of hauling away unwanted cardboard boxes. Heavy-duty solid-steel blades perforate cardboard, producing flexible, shock-absorbing netting which is easy to wrap around items for protection during shipment.

## Greenwave 410



- Perforates and trims excess in a single pass
- Heavy-duty solid steel perforating blades
- Adjustable cutting guide allows users to trim to the exact size needed for individual items
- All-metal housing
- Rubber suction feet for stability
- Rugged metal gearing for longevity

<b>GSA PRICE:</b>	<b>\$2,218</b>
<b>Perforating Speed:</b>	Up to 34 fpm (10.4m/min)
<b>Max. Perforating Width:</b>	Up to 16" (410mm)
<b>Max. Input Thickness:</b>	Up to 0.4" (10mm)
<b>Dimensions:</b>	23.2" W x 16.5" D x 14.2" H

Perforates and trims cardboard in a single pass



## Greenwave 430



- Perforates and trims excess in a single pass
- Heavy-duty solid steel perforating blades
- Adjustable cutting guide allows users to trim to the exact size needed for individual items
- All-metal housing
- Heavy-duty casters for mobility
- Rugged metal gearing for longevity
- Durable molded plastic waste bin

<b>GSA PRICE:</b>	<b>\$4,396</b>
<b>Perforating Speed:</b>	Up to 40 fpm (12.2m/min)
<b>Max. Perforating Width:</b>	Up to 16.9" (430mm)
<b>Max. Input Thickness:</b>	Up to 0.79" (20mm)
<b>Dimensions:</b>	24.8" W x 22.4" D x 38.1" H
<b>Waste Bin Capacity:</b>	Up to 28 gal.

Corrugated cardboard netting can be trimmed to size, wrapped around items, and used as void fill



# CASINO SHREDDER

Online Demos at [www.formax.com](http://www.formax.com)

In the casino and gaming industry, security is a top priority, both on the gaming floor and behind the scenes. Reduce the risk of fraud with the FD 87 Casino and FD 87 Casino EX Shredders. These specially-designed units combine user-friendly features with the industrial strength needed to ensure retired gaming pieces - cards, tokens, dice, chips - stay out of the wrong hands.

## FD 87 Casino / FD 87 Casino EX



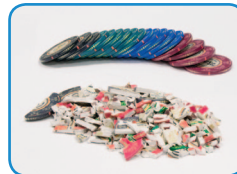
FD 87 Casino EX

- Destroy cards, dice, casino chips, tokens
- Casino: Enclosed shredding chamber with Plexi window
- Casino EX: Conveyor-fed with real-time camera monitoring to display and record destruction of pieces
- Heat-treated solid steel cutting blades
- Safety key lock ensures authorized access
- LED Control Panel
- AC-gear motor
- Rugged waste bin
- Auto Cleaning
- Steel cabinet with casters
- Circuit breaker
- Large emergency stop button
- Thermal overload protection

	FD 87 Casino	FD 87 Casino EX
<b>GSA PRICE:</b>	<b>\$12,249</b>	<b>\$19,369</b>
<b>Oil / (4) 1 gal. bottles:</b>	#8000-20	#8000-20
<b>Cutting Style:</b>	Cross Cut	Cross Cut
<b>Capacity Per Cycle:</b>	Up to 3 decks of cards, 20 dice, 40 casino chips (clay or plastic)	Up to 650 lb/hour (playing cards)
<b>Feed Opening:</b>	4.75" W x 6" L	1.8" W x 6" L
<b>Shred Size - Cards:</b>	≤ .19" x 3"	≤ .5" x 3.5"
<b>Shred Size - Dice:</b>	≤ .5" x .5"	≤ .5" x .5"
<b>Shred Size - Chips:</b>	≤ .75" x 1.5" (1.5" Chip)	≤ .75" x 1.5" (1.5" Chip)
<b>Dimensions:</b>	24" W x 36" D x 48.5" H	29" x 53" x 52"
<b>Bin Capacity:</b>	7 gal.	28 gal.
<b>Power Supply:</b>	3-Phase 220V, 60Hz, 20A NEMA L15-20P plug included NEMA L15-20R receptacle required	



FD 87 Casino EX camera monitoring system displays and records real-time feeding and destruction of gaming materials.



Formax Casino Shredders make quick work of casino chips, dice and cards

# INDUSTRIAL CONVEYOR SHREDDERS

Online Demos at [www.formax.com](http://www.formax.com)



Front access waste bin allows the shredder to be placed against a wall



LED Control Panel provides real-time status updates with a load indicator to avoid jams



Large infeed table with conveyor belt, safety stop button and bar for immediate shutdown

## FD 8806CC / FD 8806SC Industrial Conveyor Shredders

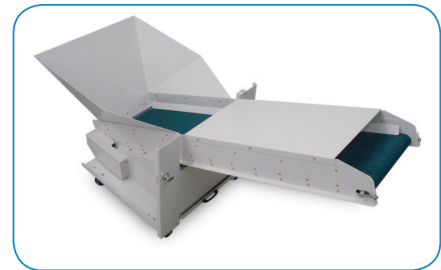
- High-volume industrial conveyor-fed models for centralized shredding
- Shreds files, stacks of computer forms, cardboard, tapes, ribbons and CDs
- LED Control Panel with load indicator
- Auto Start/Stop, Auto Reverse & Auto Cleaning
- Front waste bin access allows the shredder to be placed against a wall
- All-metal gearing
- Strip-cut model shreds up to 125 sheets at once
- Large safety bar to stop operation
- Heat-treated solid steel cutting blades
- Rugged waste bin on casters for easy emptying
- EvenFlow™ Integrated Automatic Oiling System

	FD 8806CC	FD 8806SC
<b>GSA PRICE:</b>	<b>\$10,308</b>	<b>\$10,335</b>
<b>Oil / (4) 1 gal. bottles:</b>	#8000-20	#8000-20
<b>Bags / case of 100:</b>	#8000-80	#8000-80
<b>Cutting Style:</b>	Cross Cut	Strip Cut
<b>Shred Size:</b>	1/4" x 2"	1/2"
<b>Sheet Capacity:</b>	75 to 90 *	105 to 125 *
<b>Speed:</b>	Up to 40 fpm	Up to 50 fpm
<b>Feed Opening:</b>	16"	16"
<b>Dimensions:</b>	31" W x 54" L x 43.5" H	31" W x 53" L x 51" H
<b>Bin Capacity:</b>	36 gal.	49 gal.
<b>Weight:</b>	661 lbs.	727 lbs.
<b>Security Level:</b>	P-3	P-1
<b>Power Supply:</b>	3-Phase, 220V, 50/60Hz	

\* Sheet capacity may vary due to variations in paper & power supply.



**FD 8906CC**



With the optional Output Conveyor, output capacity is virtually unlimited, depending only on the size of the external waste bin



FD 8906B Shredder/Baler combination compresses shredded material into a bale up to 154 gallons

## FD 8906CC / FD 8906B Industrial Conveyor Shredders

- High-volume industrial conveyor-fed models for centralized shredding
- Shreds entire files, stacks of computer forms, tapes, cardboard & more
- FD 8906B System compacts shredded material into a bale
- Front waste bin access allows the FD 8906CC to be placed against a wall
- Dual-compartment waste bin and two reusable nylon bags
- Shred up to 650 sheets at once
- LED Control Panel with load indicator
- Auto Start/Stop, Auto Reverse & Auto Cleaning
- EvenFlow™ Automatic Internal Oiling System
- All-metal gearing
- Large safety bar to stop operation
- Heat-treated solid steel cutting blades
- Optional Rear Output Conveyor for FD 8906CC



Control Panel includes LED load indicator, safety key and emergency stop button

	<b>FD 8906CC</b>	<b>FD 8906B</b>
<b>GSA PRICE:</b>	<b>\$25,036</b>	<b>\$53,996</b>
<b>Oil / (4) 1 gal. bottles:</b>	#8000-20	#8000-20
<b>Bags / (2) Reusable Nylon:</b>	#8000-95	n/a
<b>Bags / case of 40 for Baler:</b>	n/a	#8000-90
<b>FD 8900-10</b>	<b>\$5,555</b>	n/a
Rear Output Conveyor		
<b>FD 8900-20 Additional</b>	<b>\$1,375</b>	n/a
Waste Bin, single		
<b>Cutting Style:</b>	Cross Cut	Cross Cut
<b>Shred Size:</b>	5/16" x 1-1/2" - 3"	5/16" x 1-1/2" - 3"
<b>Sheet Capacity:</b>	Up to 650 *	Up to 650 *
<b>Speed:</b>	Up to 35 fpm	Up to 35 fpm
<b>Feed Opening:</b>	21"	21"
<b>Dimensions:</b>	47" W x 81" L x 63" H	47" W x 129" L x 63" H
<b>Bin Capacity:</b>	102 gal.	n/a
<b>Baler Capacity:</b>	n/a	154 gal. bale
<b>Bale Size:</b>	n/a	31" W x 22" L x 19" H
<b>Weight:</b>	1,984 lbs.	3,086 lbs.
<b>Security Level:</b>	P-3 / Level 2	P-3 / Level 2
<b>Power Supply:</b>	3-Phase, 220V, 50/60Hz, 50 Amp dedicated line required, CS8369 receptacle required	
<b>Delivery Requirements:</b>	Customer-supplied forklift for installation	

\* Sheet capacity may vary due to variations in paper & power supply.



Formax AutoSeal® Pressure Sealers transform pressure-sensitive one-piece mailers into secure, sealed mail-ready pieces. Various models are available for specific needs including: Low, Medium and High-Volume Tabletop, In-Line, Stand-Alone, & High-Volume Production.



## FD 1202 Low-Volume Tabletop

**GSA PRICE \$2,996**

Hopper Capacity: Up to 160 forms 20#

Fixed Speed: Up to 38 forms per minute, based on 11" Z-fold

Form Size: Up to 8.5" W x 14" L

Features: Drop-in feed system, compact tabletop design, 14" form length



## FD 1406 / FD 1506 Low-Volume / Mid-Volume Tabletop

**FD 1406**

**FD 1506**

**GSA PRICE \$4,752**

**\$5,439**

Hopper Capacity: Up to 160 forms 20#

Up to 200 forms 20#

Fixed Speed: Up to 73 forms per minute, based on 11" Z-fold

Up to 100 forms per minute, based on 11" Z-fold

Paper Size: Up to 8.5" W x 14" L

Up to 8.5" W x 14" L

Features: **All:** Color touchscreen control panel, drop-in feed system, 14" form length, uneven custom folds  
**FD 1506 only:** Extended fold plate for uneven "C" folds

Options: Cabinet, 18" conveyor, reverse stacking conveyor, 402 Series Jogger



## FD 1606 Mid-Volume Tabletop

**GSA PRICE \$7,339**

Hopper Capacity: Up to 200 forms 20#

Fixed Speed: Up to 6,000 forms per hour

Form Size: Up to 8.5" W x 14" L

Features: Full-color touchscreen, automatic fold settings, stores up to 3 custom folds, drop-in feed system, 14" form length, counter, uneven custom folds

Options: Cabinet, 402 Series Jogger



Shown w/optional 18" conveyor

## FD 2006 / FD 2036 Mid-Volume / High-Volume Tabletop

**FD 2006**

**FD 2036**

**GSA PRICE \$7,475 / \$10,293 (Package\*)**

**\$9,515 / \$12,010 (Package\*)**

Hopper Capacity: Up to 250 forms 24#

Up to 350 forms 24#

Fixed Speed: Up to 8,000 forms per hour

Up to 11,000 forms per hour

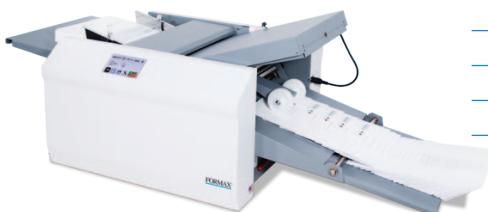
Form Size: Up to 8.5" W x 14" L

Up to 8.5" W x 14" L

Features: Full-color touchscreen, drop-in feeding, 14" form length, uneven custom folds, six-digit counter, noise reduction

Options: Cabinet, 18" conveyor, reverse stacking conveyor, 402 Series Jogger

\* Package includes 18" conveyor and cabinet



## FD 2056 High-Volume with Automatic Fold & Form Length Settings

**GSA PRICE \$12,367 / \$19,520 (Package with V-Stack36i Conveyor & 2 Cabinets)**

Hopper Capacity: Up to 500 forms 20#

Variable Speed: Up to 17,000 forms per hour, based on 11" Z-fold

Form Size: Up to 12.25" W x 18" L

Features: Full-color touchscreen control panel, integrated telescoping conveyor, 11 automatic fold settings, stores up to 35 custom folds, AutoStack™ wheels, 17" form capability, automatic paper length settings, drop-in feed system, six-digit addition and batch counter, removable roller cover, easy-off feed wheel shaft, adjustable feed table pressure, standard fold setting customization

Options: Cabinet, V-Stack36i vertical stacker, 402 Series Jogger



FD 2006iL System shown with Pressure Sealer & Alignment Base, laser printer (not included), optional cabinets and 18" conveyor

**FD 2006iL In-Line Tabletop System with Laser Printer**

**GSA PRICE \$9,307 / \$12,592 (Package with 18" Conveyor and 2 Cabinets)**

Hopper Capacity: Printer Dependent (printer not included)

Speed: Printer Dependent

Form Size: Up to 8.5" W x 14" L

Features: Print, fold & seal in one step, enclosed paper path for document security, touchscreen control panel, automatic fold settings, six-digit counter, easy to install with alignment base (included), 11" & 14" form length, fault detector

Options: 2 cabinets, 18" conveyor

**FD 2096 Mid-Volume Production**

**GSA PRICE \$43,668**

Hopper Capacity: Up to 500 forms 24# (FD 2094)

Variable Speed: Up to 30,000 forms per hour, based on 11" Z-Fold

Form Size: Up to 12" W, up to 17" L

Features: Top-loading bottom air feed deck, variable speed control, 24" outfeed conveyor, 6-digit resettable counter, sound-reducing insulated fold plate covers, rotating air suction drum for accurate feeding, ball transport deck between folder and sealer, adjustable stacking wheels, safety interlocks, fault detectors, static eliminator, casters for easy transport

Power: 120V 60Hz, 30Amp

Options: 402 Series jogger, center slitter kit, V-Stack36i vertical stacker



**FD 2200-10 Stand-Alone Pressure Sealer**

Specially designed for use with various high-production floor model folders. Integrates easily, and can be removed for non-pressure seal applications.

**GSA PRICE \$26,129**

Speed: Fixed speed of 40,000 forms per hour

Form Size: Up to 11.5" wide

Dimensions: 25" W x 24" L x 38.5" - 39" H

Power: 240V, Single Phase

Features: Precision ground clutching four-roller system, 8-ball transport deck between fold rollers and sealer, three interface connections, safety cover interlock, heavy-duty casters, mounting bracket, fault detection, static eliminator, plexi-cover



**2300 Series High-Volume Production**

Three models are available, each with automatic fold setting adjustments and capacity of up to 40,000 forms per hour and unlimited monthly duty cycle. FD 2300 air feed, FD 2300-EXT extended air feed system, and FD 2350 pile-loader in-feed.

**GSA PRICE Starting at \$95,620**

Hopper Capacity: FD 2300 - up to 500 forms 24#  
FD 2300-EXT - up to 2,500 forms 24#  
FD 2350 - up to 3,500 forms 24# \*

Variable Speed: Up to 40,000 forms per hour, based on 11" Z-Fold

Paper Size: **FD 2300/2350:** Up to 11.5" W x 25" L  
**FD 2300-EXT:** Up to 11.5" W x 14" L

Power: 220V, three phase, 20 Amp (Special 3-phase power required)  
NEMA L21-20P plug included, NEMA L21-20R receptacle required

Features: Color touchscreen, automatic fold settings, extendable output conveyor, jam detection, addition/batch counter, static eliminator, safety interlocks

Options: V-Stack36i vertical stacker, 402 Series jogger



FD 2350



FD 2300



FD 2300-EXT

\*Capacity of up to 3,500 non-windowed forms. Forms with a traditional patch window are better suited for the FD 2300 and FD 2300-EXT. U.S. Patents: 5,772,841 / 5,865,925 / 5,968,308 / 6,264,592 / Pending.

Formax Inserters automate the tedious task of folding and inserting documents into envelopes. Leading-edge technology provides a flexible, dependable, cost-effective solution for your organization's document and mail flow. Programmable jobs, color touchscreen displays, AutoSet™ one-touch setup, and optional OMR and BCR are all part of the user-friendly interface.

## 6210 Series Low-Volume Desktop Inserters



### GSA PRICE Starting at \$11,602

Feeders:	Up to 325 sheets each or approximately 45 BREs
Envelope Hopper:	Up to 150 envelopes, top-loading
Fixed Speed:	Up to 2,000 / 2,500* pieces per hour (* with optional Productivity Package)
Duty Cycle:	Up to 15,000 / 20,000* pieces per month (* with optional Productivity Package)
Vertical Output Stacker:	Up to 500 filled envelopes, reverse stacking output
Features:	5 configurations, 8" color touchscreen, AutoSet™, 50 programmable jobs, daily mail, seal/non-seal and fold-only capabilities, resettable and non-resettable counters, folds/inserts up to 5 sheets
Options:	CIS Scanner for OMR, 1D and 2D BCR, and OCR, production feeder, single or multi-code reading licenses, productivity package, front/rear exit tray, short feed trays, catch tray, cabinet, joggers

## 6308 Series Mid-Volume Desktop Inserters



FD 6308-Standard 3

### GSA PRICE Starting at \$22,609

Feeders:	Up to 325 sheets each or approximately 45 BREs
High-Capacity Feeder:	Up to 725 sheets, 20# bond
Envelope Hopper:	Up to 325 envelopes, top-loading
Fixed Speed:	Up to 3,800 pieces per hour
Duty Cycle:	Up to 40,000 pieces per month
Vertical Output Stacker:	Up to 500 filled envelopes, reverse stacking output
Features:	4 models available with or without intelligence, 7" color touchscreen control panel, paper & envelope presence sensors, high-capacity vertical stacker, 50 programmable jobs, AutoSet™ one-touch set-up, folds/inserts up to 10 sheets (half-fold) or up to 8 sheets (tri-fold), daily mail station, seal/non-seal and fold-only, production feeder, OMR, 1D-2D BCR, OCR, CIS scanner (w/intelligence)
Options:	High-capacity production feeder, short feed tray, side exit front, 402 Series Joggers

## 6406 Series Mid/High-Volume Modular Desktop Inserters



6406 Series with High-Capacity Document Feeder and optional Production Feeder

### GSA PRICE Starting at 26,641

Feeders:	Up to 325 sheets each or approximately 45 BREs
Envelope Hopper:	Up to 325 envelopes, top loading
Vertical Output Stacker:	Up to 500 filled envelopes, reverse stacking output
Fixed Speed:	Up to 4,000 pieces per hour, #10 envelopes
Duty Cycle:	Up to 60,000 per month
Features:	2 to 6 feeders, 7" graphics-based color touchscreen control panel, vertical output stacker, paper/envelope presence sensors, AutoSet™ one-touch set-up, 50 programmable jobs, cascade mode, daily mail station, seal/non-seal and fold-only capabilities, folds/inserts up to 10 sheets (half-fold) or up to 8 sheets (tri-fold), capable of inserting top/middle/bottom-address documents into top-flap envelopes, water level alert, ECO mode
Options:	CIS Scanner, OMR/BCR/OCR reading, production feeders, side exit, short feed trays, cabinets

## 6608 Series Mid/High-Volume Modular Desktop Inserters



6608 Series shown with optional Thin Booklet Feeder and Production Feeder

### GSA PRICE Starting at \$37,096

Feeder Capacity:	Up to 325 sheets each or approximately 45 BREs
Envelope Hopper:	Up to 500 envelopes, top loading
Vertical Output Stacker:	Up to 500 filled envelopes, reverse stacking output
Fixed Speed:	Up to 4,300 pieces per hour, #10 envelopes
Duty Cycle:	Up to 80,000 per month
Features:	2 to 7 feeders, 10" graphical color touchscreen, 50 programmable jobs, vertical output stacker, paper/envelope presence sensors, 725-sheet high-capacity feeder, cascade mode, daily mail mode, Auto-Set™ set-up, seal/non-seal/fold-only, handles envelopes up to 6.4" H x 9.8" W, folds/inserts up to 10 sheets (half) or up to 8 sheets (tri), inserts top/middle/bottom address documents, ECO mode
Options:	CIS Scanner, OMR/BCR/OCR reading, thin booklet feeder, production feeders, side exit tray, short feed trays, cabinets, 402 Series Joggers

# INSERTERS - HIGH-VOLUME MODULAR



FD 7104 Standard 2F

## 7104 Series High-Volume Modular Inserters

<b>GSA PRICE</b>	<b>Starting at \$48,441</b>
Tower Feeder	<b>Standard 1F:</b> One 1,000-sheet feeder
Sheet Capacity:	<b>Standard 2F:</b> One 500 and one 1,000-sheet feeder <b>Standard 3:</b> Three 500-sheet feeders
Speed:	1-sheet, letter fold: up to 4,500 / 5,500 per hour (with optional Productivity Package)
Accumulation Speed:	Multiple sheets: Up to 6,900 / 9,400 per hour (with optional Productivity Package)
Envelope Hopper:	Top-loading, up to 800 standard envelopes
Duty Cycle:	Up to 180,000 pieces per month
Features:	Modular design up to 17 feeders, 22" color touchscreen interface, automatic job setup, unlimited programmable jobs, folds up to 8 sheets at once, cascade mode, accumulation/divert deck, high-capacity output conveyor, reads all code types, daily mail mode, custom cabinets
Options:	Productivity Package, high-capacity versatile feeders, intelligent feeders, CIS scanners, output sorter, catch trays, 402 Series joggers

## 7700 Series High-Volume Modular Inserters

<b>GSA PRICE</b>	<b>Starting at \$39,767</b>
Base Models:	<b>Base 13:</b> 5K speed license, 8K accumulator speed license <b>Base 19:</b> 5K speed license, 14K accumulator speed license <b>Base 15:</b> 7K speed license, 8K accumulator speed license <b>Base 21:</b> 7K speed license, 14K accumulator speed license
System Speed:	Up to 7,000 envelopes/hour (#10 envelopes)
Accumulation Speed:	Up to 14,000 sheets/hour
Document Feeder Capacity:	Up to 2,000 sheets (combinations of 500 and 1,000 sheet feeders)
Tower Feeder Sheet Size:	Up to 16" L portrait feeding (folding), 8.5" L landscape feed (no folding) Up to 8.5" W portrait feeding (folding), 12" W landscape feed (no folding)
High-Capacity Insert Feeder:	Up to 250 sheets 20# (80gsm), up to 1/4" (6mm) booklets*
Envelope Feeder:	Top-loading, up to 800 #10 envelopes or 500 10" x 13" flats (landscape orientation)*
Envelope Size:	3.9" x 10" H x 8.9" - 13" W*
Programmable Jobs:	Unlimited
Duty Cycle:	Up to 300,000 pieces per month
Maximum Set Thickness:	Up to 80 sheets, up to 3/8" (10mm) thick*
Maximum Sheet Thickness:	Up to 200gsm*
Code Reading:	OMR, BCR, 2D Data Matrix, QR, able to read barcodes from reverse side of page
Features:	Modular design up to 11 feed stations, 22" wide color touchscreen interface, unlimited programmable jobs, accumulation/divert deck with integrated reset button, daily mail mode, high-capacity output conveyor, predictive intelligence with dynamic time-to-completion display, custom cabinets
Options:	5 tower feeder-folders available, feeder-folder modules, intelligent and non-intelligent high-capacity feeders, thick set upgrade license, envelope sorter, multi-read license, catch tray, CIS scanning kit, face-up/face-down conversion kit



22" Color Touchscreen Interface features intuitive graphics, dynamic time-until-job-completion display, and unlimited programmable jobs.



High Capacity Insert Feeder Holds up to 10" of material, handles Daily Mail sets, and thin booklets up to 6mm thick.



Feeder-Folder Module feeds inserts without folding, folds C/Z/Half and pre-folded inserts, handles Daily Mail sets, optional full-page code reading. Up to 8 can be used in line.



Tower Feeder w/ High-Capacity Trays and Accumulation/Divert Deck including integrated accumulator reset button

Folding documents has never been easier! With a variety of models to choose from, you can automate any size folding job, from entry-level to high production air-feed models. Formax folders offer feature-rich design and ease of operation. Features include full-color touchscreen control panels, a drop-in feed system, standard and custom folds, and various output options. Telescoping output conveyors can be used in small spaces, or extended to hold up to 500 folded documents.

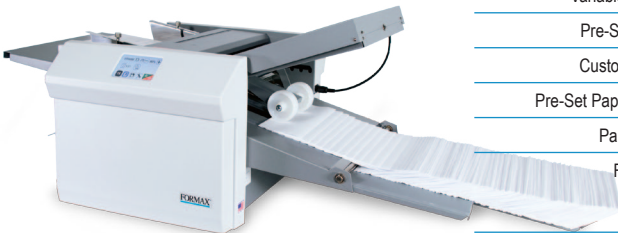
**FD 346 Tabletop Folder with Manual Fold Settings**



FD 346 Touchscreen Control Panel

<b>GSA PRICE</b>	<b>\$3,472</b>
Hopper Capacity:	Up to 500 sheets 20#
Fixed Speed:	Up to 15,500 sheets per hour, based on 11" Z-Fold, 6 Settings
Pre-Marked Folds:	C, V, Z, Gate, Fold Out and Double Parallel
Pre-Marked Paper Sizes:	11", 14", 17"
Paper Size:	Up to 3.5" - 12.25" W x 5" - 18" L
Features:	Full-color touchscreen control panel, six pre-set folds, resettable counter, batch counter, custom fold settings, fault detection, fine-tune adjustment, quick-release fold stops, adjustable stacker wheels, self-centering side guides, telescoping outfeed conveyor holds up to 500 folded pieces
Options:	Multi-sheet feeder, cabinet, 402 Series Jogger

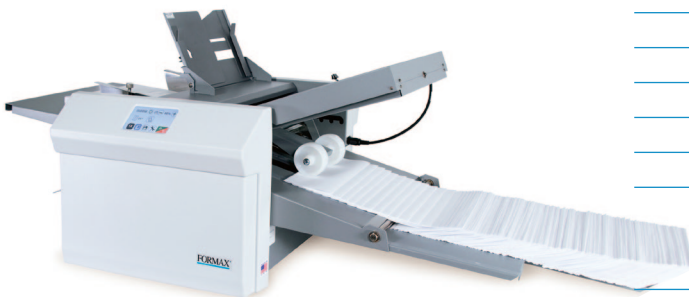
**FD 386 Tabletop Folder with Automatic Fold & Form Length Settings**



FD 386 / FD 38Xi Control Panel

<b>GSA PRICE</b>	<b>\$4,539</b>
Hopper Capacity:	Up to 500 sheets 20#
Variable Speed:	Up to 18,100 sheets per hour, based on 11" Z-Fold, 6 Settings
Pre-Set Folds:	C, V, Z, Gate, Fold Out and Double Parallel
Custom Folds:	Stores up to 27 custom folds into memory
Pre-Set Paper Sizes:	11", 14", 17"
Paper Size:	Up to 3.5" - 12.25" W x 5" - 18" L
Features:	Full-color touchscreen control panel, 6 programmed fold settings, 6-digit resettable counter, AutoBatch, stores up to 27 custom folds, fault detection, fine-tune adjustment, cross folding, adjustable stacker wheels, self-centering side guides, telescoping outfeed conveyor
Options:	Multi-sheet feeder, short fold/small document kit, cabinet, 402 Series Jogger, V-Stack36i vertical stacker

**FD 38Xi Tabletop Folder with Fully Automatic Settings**



<b>GSA PRICE</b>	<b>\$5,075</b>
Hopper Capacity:	Up to 500 sheets 20#
Variable Speed:	Up to 18,100 sheets per hour, based on 11" Z-Fold, 6 Settings
Stacker Wheels:	Automatic
Pre-Set Folds:	C, V, Z, Gate, Fold Out and Double Parallel
Custom Folds:	Stores up to 36 custom folds into memory
Pre-Set Paper Sizes:	11", 14", 17"
Paper Size:	Up to 3.5" - 12.25" W x 5" - 18" L
Features:	Includes all FD 386 features, plus AutoStack™ fully automated stacker wheels, multi-sheet feeder for up to 4 stapled sheets, adjustable feed table pressure for thick and thin stocks, fold plate locks, stores up to 36 custom folds, telescoping outfeed conveyor holds up to 500 folded pieces
Options:	Cabinet, 402 Series jogger, V-Stack36i vertical stacker



Removable Feed Wheels



Multi-Sheet Feeder



Closed Conveyor

## FD 3302 Tabletop Air-Suction Folder with Automatic Settings



**GSA PRICE \$9,265**

Hopper Capacity:	Up to 625 sheets, up to 1.96" high
Variable Speed:	Five speed levels, up to 18,600 sheets/hour (11", single fold)
Stacker Wheels:	Automatic
Pre-Set Folds:	C, Z, Half, Fold Out, Gate, Double Parallel Cross Fold created by feeding through a second time
Custom Folds:	Stores up to 30 custom folds into memory
Paper Size:	Min: 4.73" x 7.2" Max: 12.2" x 25.5" L
Paper Weight:	Uncoated: 52.3 - 157gsm (14 - 40#) Coated: 73.3 - 157gsm (19 - 40#) Maximum: Up to 230gsm (single fold) *
Features:	Air suction feed system, color touchscreen, extended feed tray, automatic paper size detection, automatic fold plate setting, side air system, adjustable air flow, optical & ultrasonic double feed detection, built-in DC fans, batch counting, automatically adjusting outfeed stacker wheels, standard cross-folding, four-digit counter, insulated for noise reduction, energy saving mode
Option:	402 Series Jogger

\* Maximum paper weight 230gsm with limitations. Testing is required.

## atlas-AS



## ATLAS-AS Air-Feed Document Folder

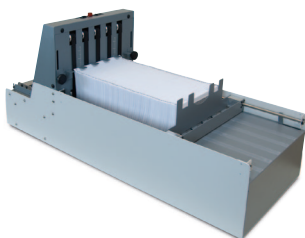
**GSA PRICE \$15,921**

Hopper Capacity:	Up to 500 sheets, 22# bond
Speed:	Up to 27,500 per hour *
Pre-Set Folds:	C, V, Z, Gate, Fold Out and Double Parallel
Paper Sizes:	Min: 6.2" L x 5.5" W (3.7" with optional narrow sheet attachment) Max: 26.5" L x 14.3" W
Paper Weight:	Min: 16# bond Max: 90# cover (variable, based on material and grain direction)
Programmable Jobs:	Unlimited
Features:	Air-suction feed table, 7" color touchscreen control panel, automatic outfeed rollers, perforating/scoring unit, skew and micro adjustments, fully-enclosed fold plates for sound reduction, batch counter, double document detector
Options:	Narrow sheet guide attachment, 56-tooth perforating wheel, perforating anvil, light/heavy scoring wheels, scoring anvil, air joggers

\* Speed varies depending on paper weight

## V-STACK36i VERTICAL STACKER

The V-Stack36i Vertical Stacker increases efficiency and processing speed of folders and pressure sealers. Unlike a traditional outfeed conveyor, the V-Stack36i stacks forms vertically, providing a neat stack which is easier to unload for further processing. It's compatible with a variety of Formax document folders and pressure sealers, including the FD 38Xi, FD 2056, FD 2096 and 2300 Series.



## V-Stack36i Vertical Stacker

**GSA PRICE \$6,247 (Adjustable Stand: \$2,920)**

Speed:	Variable, depending on input machine
Capacity:	Up to 22" of folded documents, approximately 1,500 sheets
Compatibility:	Works with a variety of folders and pressure sealers, including FD 38Xi, FD 2056, FD 2096, 2300 Series, ** must be purchased with the machine, cannot be interfaced in the field **
Features:	Photo-eye activation, six-ball-roller deck, guide wheels, LED alert, vertical paper stop
Options:	Adjustable-height stand (required for FD 2096 and 2300 Series; optional for tabletop machines)

ColorMax7, ColorMax8 and ColorMaxLP2 Digital Color Printers use Memjet® inkjet technology to produce full-color CMYK output. The Memjet® print head features 70,400 ink nozzles with no moving parts for higher speeds, lower costs and less noise.

Using thermal inkjet technology, ColorMax Printers don't require heat or contact to create an image, so they can safely be used with pre-printed and windowed envelopes without marring the original image or damaging the window. High-capacity ink tanks and fully-automated print head cleaning ensure optimum print quality throughout print runs. The ColorMax8 and ColorMaxLP2 each feature a 7" color touchscreen for complete control over the entire print process.



The ColorMaxLP2 produces brilliant full-color labels at up to 60 feet per minute. Revolutionary print engine design allows for "on the fly" print head maintenance, keeping the print web intact throughout production. It includes a powered roll Unwinder/Rewinder system for roll-to-roll production. It prints up to 16.8 million colors, on a variety of label stocks, with full-bleed capability on media up to 8.5" wide.



## ColorMax7 Digital Color Printer

<b>GSA PRICE</b>	<b>\$18,096 (Printer Only) / \$19,979 (Pkg with 3-foot conveyor)</b>
Speed, page printing:	Up to 3,600 per hour
Speed, #10 envelopes:	Up to 7,500 per hour
Duty Cycle:	30 million pieces, or 500,000 per month over a 5-year life cycle
Material Size:	Min: 3" W x 4.25" L Max: 9.5" W x 17" L
Material Thickness:	Up to 1/48" (0.5mm / 430 gsm / 160# cover / 240# index)
Print Quality:	Up to 1600 x 1600 dpi @ 6 inches per second, up to 1600 x 800 dpi @ 12 ips
Print Area:	Up to 8.5" x 17" with full bleed capability
Options:	3-foot conveyor stacker, 1,000 watt infrared dryer, adjustable cabinet, software
<i>* Microsoft Office not supported</i>	



## ColorMax8 Digital Color Printer

<b>GSA PRICE</b>	<b>\$20,527 (Printer Only) / \$22,163 (Pkg with 3-foot conveyor)</b>
Speed, page printing:	Up to 3,600 per hour 11" sheet
Speed, #10 envelopes:	Up to 8,000 per hour (landscape orientation)
Duty Cycle:	Up to 400,000 per month
Material Size:	Min: 3" W x 4" L Max: 10.5" W x 17" L
Material Thickness:	Up to 3/8" (10mm)
Print Quality:	Up to 1600 x 1600 dpi @ 6 inches per second, up to 1600 x 800 dpi @ 12 ips
Print Area:	Up to 8.77" x 40" with full bleed capability under 8.6"
Features:	7" color touchscreen, image preview, wide flat paper path handles stuffed envelopes, 10" x 13" flats, padded envelopes, and more, electronic thickness control
Options:	3-foot conveyor stacker, 1,000 watt infrared dryer, adjustable cabinet, cmColor RIP and Color Match Software

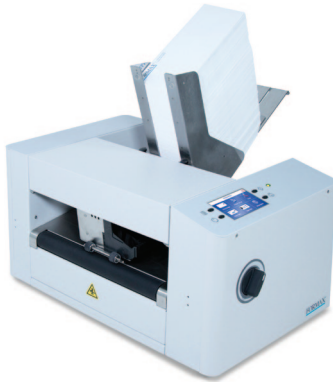
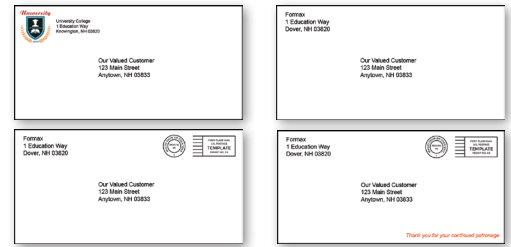


## ColorMaxLP2 Digital Color Label Printer w/Unwinder/Rewinder

<b>GSA PRICE</b>	<b>\$16,277 (includes powered Unwinder and Rewinder)</b>
Speed:	Up to 12 inches per second / 60 fpm
Label Media Size:	Width: 2" - 9" (50.8 - 229mm) Length: 2" - 48" (50.8mm - 1220mm)
Label Thickness:	Min: 0.005" (0.13mm) Max: 0.01" (0.3mm, including liner)
Label Types:	Paper, polyester, polypropylene, vinyl
Media Sensors:	Gap (movable), continuous, black mark
Print Quality:	Up to 1600 x 1600 dpi @ 12 ips
Print Width:	Up to 8.5" (216mm) with full bleed capability
Core Diameter:	Requires 3" (76.2mm) cardboard core
Unwinder/Rewinder:	Handles rolls up to 10" (250mm) outside diameter
Ink Tank Capacity:	CMYKK, 250ml each
Options:	Adjustable-height cabinet

AP Series Tabletop Digital Address Printers offer high speeds, a full-color touchscreen, and the ability to print on a variety of substrates including UV coated media, with a print resolution of up to 600 dpi.

Specially designed thermal inkjet cartridges provide optimal print quality and adhesion, and are available in several formulations. Three models offer print combinations including outgoing address, return address, indicia, and custom.



## AP2 Digital Address Printer

**GSA PRICE \$10,957**

Print Technology:	Thermal inkjet, 4 high capacity cartridges
Addressing Speed:	Up to 22,000 #10 envelopes/hour Up to 30,000 postcards/hour
Integrated Feeder Capacity:	Up to 500 #10 envelopes
Print Quality:	Up to 600 x 600 DPI
Imaging Area:	Up to 2" x 15"
Material Size:	Min: 5" L x 3" W Max: 15" L x 13.5" W
Material Thickness:	Up to 6.3mm / 1/4"
Duty Cycle:	Up to 500,000 per month
Print Head Layout:	4 pen stitched design
Features:	4.5" color touchscreen with adjustable backlight, spot color capability, batch/job/lifetime counters, on-screen ink monitor, up to 16GB of job storage
Options:	AP10 3-foot conveyor stacker, infrared dryer, variety of ink formulations for UV coated, non-coated, color, quick-drying, invisible



## AP3 Digital Address Printer

**GSA PRICE \$15,848**

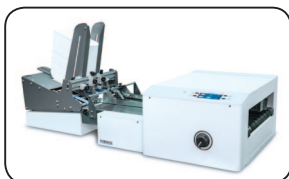
Print Technology:	Thermal inkjet, 6 high capacity cartridges
Addressing Speed:	Up to 26,000 #10 envelopes/hour Up to 34,000 postcards/hour
Integrated Feeder Capacity:	Up to 500 #10 envelopes
Print Quality:	Up to 600 x 600 DPI
Imaging Area:	Up to 3" x 17"
Material Size:	Min: 5" L x 3" W Max: 15" L x 13.5" W
Material Thickness:	Up to 9.5mm / 3/8"
Duty Cycle:	Up to 1,000,000 per month
Print Head Layout:	3-pen stitched + 3-pen stitched design
Features:	4.5" color touchscreen with adjustable backlight, spot color capability, batch/job/lifetime counters, on-screen ink monitor, up to 16GB of job storage
Options:	AP10 3-foot conveyor stacker, infrared dryer, variety of ink formulations for UV coated, non-coated, color, quick-drying, invisible



## AP4 / AP4F Digital Address Printer

**GSA PRICE \$19,593 / \$22,015 (with Friction Feeder and Stand)**

Print Technology:	Thermal inkjet, 8 high capacity cartridges
Addressing Speed:	Up to 26,000 #10 envelopes/hour Up to 34,000 postcards/hour
Print Quality:	Up to 600 x 600 DPI
Imaging Area:	Up to 4" x 50"
Material Size:	Min: 5" L x 3" W Max: 15" L x 13.5" W
Material Thickness:	Up to 12.7mm / 1/2"
Duty Cycle:	Up to 1,250,000 per month
Print Head Layout:	2-pen + 4-pen + 2-pen stitched design
Features:	4.5" color touchscreen with adjustable backlight, spot color capability, batch/job/lifetime counters, on-screen ink monitor, up to 16GB of job storage
Options:	AP10L 3-foot conveyor stacker, CJ-15 infrared dryer, variety of ink formulations for UV coated, non-coated, color, quick-drying and invisible security



AP4F system includes:  
AP4, AP12 Heavy Duty  
Friction Feeder and  
AP14 Tabletop Stand



Cut-True Cutters combine ease of use, accuracy and the highest standard of safety. Each features a high-quality hardened steel blade, LED Laser Line for accuracy, and user-friendly controls. These manual, semi-automatic, automatic and hydraulic models are the ideal solution for transforming brochures, invitations and more with professional, accurate cutting.



Complete tool kit for adjustments, blade changing & general maintenance



## Cut-True 13M Tabletop Manual Paper Cutter

<b>GSA PRICE</b>	<b>\$705</b>
Cutting Action:	Manual lever handle
Maximum Cutting Width:	14.5" (370mm)
Maximum Paper Stack Height:	5/8" (15mm)
LED Laser Cut Line:	Yes
Clamp Style:	Lever
Back Gauge Adjustment:	Thumbscrew
Back Gauge Reading:	Scale, in both inches (1/32") and metric (1mm)
Safety Certifications:	CE approved
Standard Features:	Safety covers, blade changing handles, complete tool kit for adjustments and general maintenance



## Cut-True 15M Manual Paper Cutter

<b>GSA PRICE</b>	<b>\$1,952</b>
Cutting Action:	Manual lever handle
Maximum Cutting Width:	16.9" (430mm)
Maximum Paper Stack Height:	2.15" (55mm)
LED Laser Cut Line:	Yes
Clamp Style:	Spindle-guided clamping wheel
Back Gauge Adjustment:	Manual crank
Back Gauge Reading:	Scale, in both inches (1/32") and metric (1mm)
Standard Features:	Blade change safety tool, safety covers, metal stand, feet for tabletop use



## Cut-True 16M Manual Paper Cutter

<b>GSA PRICE</b>	<b>\$3,018</b>
Cutting Action:	Manual lever handle
Maximum Cutting Width:	18.7" (475mm)
Maximum Paper Stack Height:	3.15" (80mm)
LED Laser Cut Line:	Yes
Clamp Style:	Spindle-guided clamping wheel
Back Gauge Adjustment:	Manual crank
Back Gauge Reading:	Scale, in both inches (1/32") and metric (1mm)
Standard Features:	Blade change safety tool, safety covers, metal stand, feet for tabletop use



## Cut-True 22S Semi-Automatic Electric Paper Cutter

<b>GSA PRICE</b>	<b>\$3,918</b>
Cutting Action:	Dual-button electric
Maximum Cutting Width:	16.9" (430mm)
Maximum Paper Stack Height:	1.75" (45mm)
LED Laser Cut Line:	Yes
Clamp Style:	Spindle-guided clamping wheel
Back Gauge Adjustment:	Manual crank
Back Gauge Reading:	Digital readout, in both inches (1/32") and metric (1mm)
Power Supply:	110V
Safety Certifications:	CE approved, UL pending
Standard Features:	Blade change safety tool, safety covers, safety key lock, metal stand, feet for tabletop use



**Cut-True 27S Semi-Automatic Electric Paper Cutter**

**GSA PRICE \$8,495**

Cutting Action:	Dual-button electric
Maximum Cutting Width:	18.9" (480mm)
Maximum Paper Stack Height:	3.15" (80mm)
LED Laser Cut Line:	Yes
Clamp Style:	Automatic
Back Gauge Adjustment:	Manual crank
Back Gauge Reading:	Digital readout, in both inches (1/32") and metric (1mm)
Power Supply:	110V
Safety Certifications:	CE approved, UL pending
Standard Features:	Blade change safety tool, safety covers, safety key lock, metal stand, feet for tabletop use



*Cut-True 29H, with optional wide side tables*

**Cut-True 29A / 29H Automatic Electric / Hydraulic Paper Cutters**

	Cut-True 29A	Cut-True 29H
<b>GSA PRICE</b>	<b>\$14,181</b>	<b>\$17,846</b>
Cutting Action:	Dual-button electric	Dual-button hydraulic
Maximum Cutting Width:	20.5" (520mm)	20.5" (520mm)
Maximum Paper Stack Height:	3.15" (80mm)	3.15" (80mm)
LED Laser Cut Line:	Yes	Yes
Programmable Jobs:	Up to 100 jobs with up to 100 steps each	Up to 100 jobs with up to 100 steps each
Length Behind Blade:	20.5" (520mm)	20.5" (520mm)
Length in Front of Blade:	18.25" (464mm)	18.25" (464mm)
Minimum Cut:	1.6" (40mm) with False Clamp .98" (25mm) without False Clamp	2.36" (60mm) with False Clamp 1.18" (30mm) without False Clamp
Table Size:	30.75" W x 15.75" D ( 781 x 400mm) 56" W x 15.75" D (1422 x 400mm) w/ optional wide side tables	
Clamp Style:	Automatic, electronically adjustable	Automatic, hydraulically adjustable
Back Gauge Adjustment:	Fully programmable using touchscreen, accurate to 0.1mm	
Standard Features:	Touchscreen control panel, LED safety curtain, false clamp, blade change safety tool, 29H also includes foot-pedal pre-clamp	
Power:	230V, 50Hz, 20A dedicated line NEMA Plug: 6-20	
Options:	Wide side tables	Wide side tables



*Cut-True 31H with standard wide side tables*

**Cut-True 31H Automatic Hydraulic Paper Cutter**

**GSA PRICE \$27,104**

Cutting Action:	Dual-button hydraulic
Maximum Cutting Width:	28.7" (730mm)
Maximum Paper Stack Height:	3.94" (100mm)
LED Laser Cut Line:	Yes
Programmable Jobs:	Up to 100 jobs with up to 100 steps each
Length Behind Blade:	28" (711mm)
Length in Front of Blade:	25" (635mm)
Minimum Cut:	2.36" (60mm) with False Clamp 1.18" (30mm) without False Clamp
Table Size:	72.75" W x 25.125" D (1848 x 638mm) with standard wide side tables 43.12" W x 21.125" D (1095 x 537mm) without standard wide side tables
Clamp Style:	Automatic, hydraulic
Back Gauge Adjustment:	Fully programmable using touchscreen, accurate to 0.1mm
Standard Features:	Touchscreen control panel, LED safety curtain, false clamp, blade change safety tool, wide side tables, foot-pedal pre-clamp, electronic fine-tune adjustment switch, air-assist ball deck
Power:	208V, 60Hz, 30A dedicated line, NEMA 6-30P

# CUT-SHEET BURSTERS & CUTTERS

Online Demos at [www.formax.com](http://www.formax.com)

Cut-Sheet Bursters and Cutters are ideal finishing solutions for multiple forms printed on a single page. The FD 4170 provides a low-volume option for bursting multiple documents on pre-perforated forms. The FD 574 Cutter produces crisp, clean edges when cutting similar cut-sheet forms without perforations. These solutions are ideal for checks, coupons, tickets, notices, membership cards and more.



## FD 4170 Cut-Sheet Burster

<b>GSA PRICE</b>	<b>\$6,859</b>
Hopper Capacity:	Up to 400 sheets 20#
Variable Speed:	5-level speed adjustment: 42, 64, 89, 114, 140 sheets per minute
Paper Size:	4" - 11" W x 5" - 17" L
Paper Weight:	13# bond - 110# index
Features:	4-digit LCD counter, three-tire top-loading system, programmable job settings, pre-programmed cut settings for 11", 14" and 17" paper, adjustable side guides for different form lengths, last job memory
Options:	402 Series Jogger



## FD 574 Cut-Sheet Cutter

<b>GSA PRICE</b>	<b>\$7,539</b>
Hopper Capacity:	Up to 500 sheets 64gsm
Variable Speed:	Up to 2,640 sheets per hour (1 or 2 cuts - 11" sheet)
Paper Size:	4" - 14.5" W x 4" - 17" L
Features:	Guillotine cutter, 100 programmable custom settings, six pre-programmed settings, counter, safety interlocks, top-loading feed system
Options:	Slitters, perforators, conveyor, 402 Series Jogger

# CREASERS / PERFORATORS

Online Demos at [www.formax.com](http://www.formax.com)

Formax Atlas High-Speed Creasers / Folders / Perforators are fully-automatic solutions to the problem of cracking in toner-based digital prints, providing a clean professional look, and allowing folding machines to fold with greater accuracy. The graphics-based 7" touchscreen control panel allows operators to easily set-up and save jobs in just minutes, or use on of the pre-programmed settings.

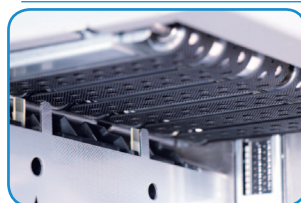
## Atlas C150 / C150P High-Speed Automatic Creaser/Perforator



<b>GSA PRICE</b>	<b>\$20,526</b> <b>\$25,542 (C150P w/2nd Crease/Perf Kit &amp; Pile Feeder)</b>
Speed:	Up to 8,500 sheets per hour * (8.5" x 11")
Sheet Size:	Max: 27.5" x 15" (51" x 15" w/standard feed table fully extended) Min: 8.2" x 3.89"
Paper Thickness:	Max: 0.015" (approx. 400gsm) Min: 0.0035" (approx. 75gsm)
Creases per Sheet:	Up to 30
Minimum Repeat Crease Distance:	0.039" (depending on paper weight)
Programmable Jobs:	Unlimited
Maximum Loading Capacity:	Up to 7.8" (4" for sheet lengths greater than 27.5")
Stacker Capacity:	Up to 4.7" high
Features:	Self-adjusting pile feed with vacuum edge registration, color touchscreen, fully automatic setup, optical sensors for accuracy, rotary perforation kit, height-adjustable outfeed stacker, quick-release blade system
Options:	Second creasing blade kit for up/down and dual creasing, wide/narrow/extra narrow creasing blade kits, cross perforation kit
	Lifetime guaranteed creaser matrix



Color touchscreen control panel



Powerful vacuum top-feed system



Extended feed table for media up to 51" long

**Atlas C350 / C350P High-Speed Automatic Creaser / Folder**



<b>GSA PRICE</b>	<b>\$37,140</b> <b>\$41,540 (C350P w/2nd Crease/Perf Kit &amp; Pile Feeder)</b>
Speed:	Up to 6,000 sheets per hour * (8.5" x 11.5")
Sheet Size:	Max: 27.6" x 15.2" (51" x 15.2" w/standard extension table) Min: 8.3" x 3.7"
Paper Thickness:	Max: 0.015" (approx. 400gsm)    Min: 0.0035" (approx. 75gsm)
Creases per Sheet:	Up to 30
Minimum Repeat Crease Distance:	0.004" (depending on paper weight)
Programmable Jobs:	Unlimited
Maximum Loading Capacity:	Stack height up to 7.9"
Outfeed:	Belt conveyor stacker, catch tray
Features:	Color touchscreen, fully automatic setup, vacuum top-feed pile feed table, infeed table extension for sheets up to 51" long, floating knife folding system, programmed for common creases/folds, single perforation wheel kit, digital thickness gauge, lifetime guaranteed creaser matrix
Options:	Dynamic creasing blade kits, perforating kits, narrow and ultra narrow creasing matrix, full cross perforation kit, light and heavy scoring wheels

\* Production speed varies based on material size and the number of creases per sheet

The Atlas-TRIO15 allows users to slit, cut, crease and even fold in a single pass. It's ideal for high-speed creasing and production of jobs including business cards, postcards, brochures, booklet covers, greeting cards and more. The 4" touchscreen control panel and the ability to store up to 150 jobs make setup and operation easy.



**atlas-TRIO15**

**Atlas-TRIO15 Multi-Function Slitter / Cutter / Creaser**

<b>GSA PRICE</b>	<b>\$24,785</b>
Speed:	24-up business cards, up to 8 sheets/minute 4-up postcards (12" x 18"), up to 10 sheets/minute 2 cut / 2 slit / 1 crease (8.5" x 11"), up to 15 sheets/minute 1 crease (8.5" x 11"), up to 5,000 sheets/hour
Feed Capacity:	Pile height up to 4"
Paper sizes:	8.2" - 13" W x 8.2" - 19" L (13" W x 27.5" L with optional long sheet kit)
Paper weight:	32# bond - 130# cover (120-350 gsm)
Programmable jobs:	Up to 150
Options:	AC-10 Folding Unit, custom slitting guides, long sheet kit

**FD 95 Rotary Perforator / Creaser**



<b>GSA PRICE</b>	<b>\$2,881</b>
Speed:	Up to 6,800 per hour
Paper size:	Minimum: 5" W x 2.5" L (150 x 64mm) Maximum: up to 13.8" W x 19" L (350 x 483mm)
Recommended paper weight:	55 - 180 gsm (Note: 55 - 60gsm paper can be processed with optional guide strips) For creasing, optimal paper weight is 150gsm
Parallel perforations/creases per sheet:	Up to 5 in a single pass
Perforating wheel capacity:	Up to 5 (includes 2 perforating wheels and 1 creasing wheel)
Feed table capacity (max. stack height):	1.18" (30mm)
Options:	Additional perforating sets, creasing sets, guide strips, micro-perforating set (17tpi)

Tabbing Systems apply tabs to folded mailpieces, and meet all USPS requirements for mailing and automation discounts. The **FD 262** uses translucent or clear tabs, and offers the cost savings of high-speed tabbing in one compact unit. The **FD 282** has the ability to apply tabs to opposite sides of a mailpiece or top & side of a mailpiece simultaneously.



## FD 262 Single-Head Tabber

**GSA PRICE \$7,497**

Speed: Up to 12,000 pieces per hour (8.5" tri-folds)

Feeder Capacity: Up to 200 tri-folds

Media Size & Thickness: 3" to 18" L x 5" to 17" W, Up to 5/32"

Tab Sensitivity Control: Adjusts for density in tab/wafer seals

Tabs Applied: 1 tab per pass

Reel Capacity: Up to 10,000 tabs, Maximum roll diameter 9", Core diameter 3"

Features: Integrated bottom feed for continuous operation, 5-digit LCD resettable counter



Edge tabbing both sides  
in a single pass

## FD 282 Double-Head Edge Tabber

**GSA PRICE Starting at \$22,427**

Speed: Single Tab: Up to 25,000 pieces per hour (tri-folds)

Double Tab: Up to 15,000 pieces per hour

Triple Tab: Up to 10,000 pieces per hour (11" minimum piece length)

Feeder Capacity: In-line design, capacity dependent on input device

Media Size & Thickness: 3.5" to 15" L x 5" to 11" W, Up to 1/4"

Tab Sensitivity Control: Adjusts for density in tab/wafer seals

Tabs Applied: 1, 2 or 3 tab per pass

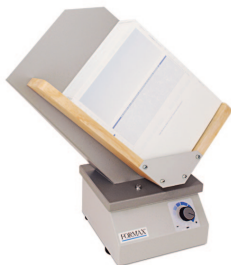
Reel Capacity: Up to 11,000 tabs, Maximum roll diameter 9", Core diameter 3"

Features: Applies paper, clear or translucent tabs as well as USPS roll stamps, able to simultaneously tab top and side or opposite sides of mailpiece, control panel with LCD screen, lifetime and resettable counters, safety interlocks

Options: FD 282-05 Feeder, FD 282-10 Heavy Duty Feeder, FD 282-20 Stand, Conveyor

# PAPER JOGGERS / ENVELOPE OPENERS / ENVELOPE SEALERS

Paper Joggers quickly align and separate forms and paper for accurate feeding, while reducing heat and static electricity caused by laser printers. Envelope Openers and Sealers make quick work of incoming and outgoing mail, and adapt to various envelope thicknesses.



## FD 402P1 Single-Bin Paper Jogger

**GSA PRICE \$1,138**

Variable Speed: Up to 4,000 vibrations per minute

Bin Capacity: Up to 800 sheets 20#

Bin Size: 3.5" D x 8.75" W x 15.5" L

Media Size: Up to 11" W x 17" L

Features: Single bin with center divider for improved jogging of smaller paper stacks, tilted rack, variable speed, solid state control for on/off/vibration speed, electromagnetic design for continuous operation



## FD 442 Envelope Opener

**GSA PRICE \$1,429**

Fixed Speed: Up to 200 envelopes per minute

Envelope Size: Up to 10" x 13"

Envelope Thickness: Up to 4 mm

Feeder Style/Capacity: Bottom feed, approximately 15 envelopes per stack

Self-Adjusting Feeding: Automatically adapts to various envelope thicknesses

Features: Automatic start/stop with photo eye sensor, LED status indicators, infeed extension for large envelopes, adjustable freestanding catch tray

# PAPER JOGGERS / ENVELOPE OPENERS / ENVELOPE SEALERS



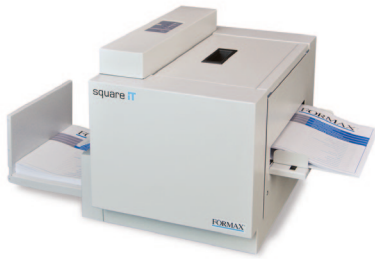
## FD 430 Envelope Sealer

<b>GSA PRICE</b>	<b>\$6,916</b>
Speed:	Up to 18,000 envelopes per hour
Infeed Capacity:	Up to 4.5" stack height*
Outfeed Capacity:	Up to 4.5" stack height*
Media Size:	Up to 9.75" wide, up to 15" long
Envelope Flap Length:	Standard: up to 2.75"      Extended: up to 4" (w/optional kit)
Package Thickness:	Up to 16 mm
Features:	Closes and seals in one pass, precision moistening roller, adjustable separator, rugged metal construction
Options:	Extended sealing kit for flaps up to 4" long, square flap moistening basin and roller

# SQUAREBACK BOOKLET FINISHERS

Online Demo at [www.formax.com](http://www.formax.com)

The Square IT gives stapled booklets a professional, perfect-bound look with the security of a stapled binding. Square IT booklets lie flat, making them easier to front-trim on a guillotine cutter. Square bindings also offer the option of printing on the spine, plus they're easier to package and store. The Square IT2 also provides operator-assisted full-bleed trimming on edges, top and bottom.



## Square IT Squareback Booklet Finisher

<b>GSA PRICE</b>	<b>\$7,637</b>
Capacity:	Up to 24 sheets of 20# bond / 80gsm
Speed:	Up to 1,800 booklets per hour
Booklet Size:	Max: 9 1/2" x 12 3/4" (240 x 325mm) Min: 4" x 4 1/2" (100 x 120mm)
Folding Modes:	4, based on booklet thickness
Features:	Operates as a compact stand-alone unit, or in-line with various digital print devices, allows for printing on spine of booklet



## Square IT2 Squareback Booklet Finisher

<b>GSA PRICE</b>	<b>\$13,676</b>
Capacity:	Up to 200 pages/50 sheets of 20# bond / 80gsm
Speed:	Up to 900 booklets per hour (based on minimum booklet size)
Finished Booklet Size:	Min: 5.85" W x 3.93" L Max: 12.6" W x 12.2" L (bypass), 12.5" W x 12.16" L (trimming all sides)
Squaring Pressure:	Adjustable, based on booklet thickness
Face Trimming:	Min: 0.04" (1mm), Max: 8.26" (210mm) (trims one side per pass)
Side Trimming:	Min: 0.04" (1mm), Max: 8.26" (210mm) (trims one size per pass)
Features:	Compact and rugged, color touchscreen, outfeed belt conveyor, standard and custom sizes, stores custom jobs in memory, operates as stand-alone or in-line with digital print devices, operator-assisted full-bleed trimming, quiet operation, jam detection, stacker full detection, rugged heavy-duty casters

# CONTINUOUS-FORM BURSTER

Formax Bursters make easy work of separating single or multi-part continuous forms. This high-volume industrial unit can handle a wide variety of single or multi-part bursting applications at speeds of up to 500 feet per minute.



## FD 676 High-Volume Burster

<b>GSA PRICE</b>	<b>\$24,952</b>
Variable Speed:	30 - 500 ft per minute
Paper Size:	2.75" - 17" (19.25" slitting) W x 2.75" - 17" L
Features:	Tractors, slitters, cabinet, safety interlocks, conveyor
Option:	Center slitter

FlashGuard Laminators feature rugged, all-metal housing which stays cool to the touch, heavy-duty heat and output rollers, variable temperature and speed controls, and a user-friendly graphics based LCD status screen.

# FLASHGUARD



## FlashGuard 13R6 Heavy-Duty 6-Roller Laminator

<b>GSA PRICE</b>	<b>\$659</b>
Maximum Paper Width:	Up to 13" (330mm)
Maximum Speed:	Up to 55 inches/minute (1,400mm/minute)
Maximum Pouch Thickness:	Up to 14 mil (350 mic)
Maximum Laminating Thickness:	Up to .118" (3mm)
Rollers:	6
Temperature Range:	Up to 320 degrees F (160 C)
Temperature & Speed Control:	Yes
Preheating Time:	6 minutes



## FlashGuard 18R6 Heavy-Duty 6-Roller Laminator

<b>GSA PRICE</b>	<b>\$1,194</b>
Maximum Paper Width:	Up to 18" (457mm)
Maximum Speed:	Up to 47 inches/minute (1,200mm/minute)
Maximum Pouch Thickness:	Up to 14 mil (350 mic)
Maximum Laminating Thickness:	Up to .118" (3mm)
Rollers:	6
Temperature Range:	Up to 320 degrees F (160 C)
Temperature & Speed Control:	Yes
Preheating Time:	6 minutes

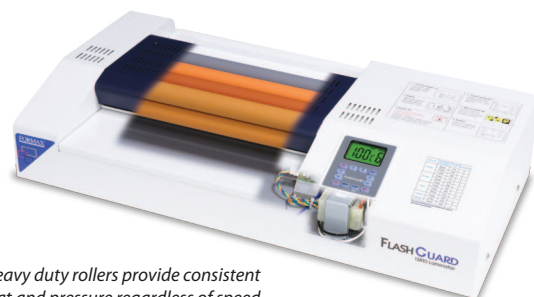


## FlashGuard 13R10 Heavy-Duty 10-Roller Laminator

<b>GSA PRICE</b>	<b>\$1,515</b>
Maximum Paper Width:	Up to 13" (330mm)
Maximum Speed:	Up to 141 inches/minute (3,600mm/minute)
Maximum Pouch Thickness:	Up to 14 mil (350 mic)
Maximum Laminating Thickness:	Up to .118" (3mm)
Rollers:	10
Temperature Range:	Up to 320 degrees F (160 C)
Temperature & Speed Control:	Yes
Preheating Time:	6 minutes



FlashGuard FG-3 and FG-5 Laminating Pouches, available in 3 mil and 5 mil thicknesses



Heavy duty rollers provide consistent heat and pressure regardless of speed

## CONTACT INFORMATION

---

### For inquiries, please contact:

Darren Glore	Denise Scotti
800-232-5535 x 168	800-232-5535 x 182
Cell: 603-285-5215	Cell: 603-834-0246
dglore@formax.com	dscotti@formax.com

### Goods & Services

**North America Industry Classification System (NAICS)**  
333318 - Office Machinery & Manufacturing  
333244 - Office Equipment Wholesalers  
339940 - Office Products

### Federal Supply Classification

3615 - Pulp & Paper Machinery  
3920 - Material Handling Equipment  
3990 - Misc. Materials Handling Equipment  
7435 - Office Information Equipment  
7490 - Misc. Office Machines  
7510 - Office Supplies  
7520 - Office Devices & Accessories

## WARRANTY

---

### Data Destruction:

- Lifetime limited warranty on Deskside and Office cutting heads
- Lifetime limited warranty on Industrial Cutting heads (parts only)
- 1-year warranty on Specialty cutting heads (parts only)
- 90-day labor warranty and 1-year parts warranty on High-Security cutting heads
- 1-year warranty on all other parts for all models

### All Other Products:

- 90-day warranty, parts and labor

Formax agrees to repair or replace, at its option, any defective part or component covered by this warranty, provided there was no abuse and we first receive written notice of a defect within the applicable warranty period. This warranty extends only to the original purchaser and does not include labor or the payment of any labor charges or incidental or consequential expenses. Warranty claims must be submitted with a replacement part order. All parts are shipped FOB Dover, NH.



## ABOUT FORMAX

---

Formax offers a complete line of solutions to Government agencies through Federal and State approved contracts. Products include High-Security, NSA-approved, EPL-listed document destruction, digital print & finishing, and mailing equipment, all thoughtfully designed to keep your facility running efficiently and effectively. Formax products are listed at our government-negotiated pricing to streamline the buying process.

Founded in 1987, Formax is a privately held company based in Dover, NH. Constantly innovating, we've become an industry leader that the U.S. Government trusts. The Formax product line is represented through an extensive GSA dealer network across North America and around the world.

# FORMAX<sup>®</sup>

[www.formax.com](http://www.formax.com)

**Corporate Office, Manufacturing,  
Sales & Service**

Dover, New Hampshire • USA

January 2024